



Office of General Services

DESIGN & CONSTRUCTION GROUP
THE GOVERNOR NELSON A. ROCKEFELLER
EMPIRE STATE PLAZA
ALBANY, NY 12242

ADDENDUM NO. 1 TO PROJECT NO. 47437

CONSTRUCTION, HVAC, AND ELECTRICAL WORK REPLACE OFFICE ROOF & WINDOWS DOT REGION 4, MONROE COUNTY 938 W LINDEN AVE EAST ROCHESTER, NY

March 7, 2025

NOTE: This Addendum forms a part of the Contract Documents. Insert it in the Project Manual. Acknowledge receipt of this Addendum in the space provided on the Bid Form.

HVAC WORK DRAWINGS

1. Revised Drawing:
 - a. Drawing No. M-101, noted "ADDENDUM #1 3/4/2025" accompanies this Addendum and supersedes the same numbered originally issued drawing.

ELECTRICAL WORK DRAWINGS

2. Revised Drawing:
 - a. Drawing No. E-101, noted "ADDENDUM #1 3/4/2025" accompanies this Addendum and supersedes the same numbered originally issued drawing.

END OF ADDENDUM

Brady M. Sherlock, P.E.
Director, Division of Design
Design and Construction

GENERAL REMOVAL NOTES:

- THESE REMOVAL DRAWINGS ARE SCHEMATIC IN NATURE & ARE BASED ON CASUAL FIELD OBSERVATIONS. IT IS NOT THE INTENTION OF THESE DRAWINGS TO INDICATE EVERY DEVICE/FIXTURE REQUIRING REMOVAL/DEMO, RATHER GENERAL SYSTEMS WHICH ARE TO BE REMOVED, IN GENERAL.
- MECHANICAL EQUIPMENT & MISC. ELECTRICAL EQUIPMENT:**
WHERE INDICATED TO BE REMOVED:
- COORDINATE ELECTRICAL REMOVALS/DISCONNECTION OF MECHANICAL UNITS WITH H-CONTRACT.
 - MAINTAIN ASSOCIATED CIRCUITS FOR RE-CONNECTION TO REPLACEMENT UNITS. UON. PULL BACK/REMOVE CONDUIT/CONDUCTORS BELOW ROOF TO ACCOMMODATE ROOF MODIFICATIONS BY C-CONTRACT.
 - REMOVE ANY ASSOCIATED MOTOR STARTERS &/OR DISCONNECTS.
 - REMOVE CIRCUIT WIRING FROM SOURCE PANEL, LABEL BREAKER AS SPARE.
 - PROVIDE REVISED TYPED PANELBOARD DIRECTORIES FOR ALL EXISTING TO REMAIN PANELS WHERE CIRCUITS ARE TO BE REMOVED.

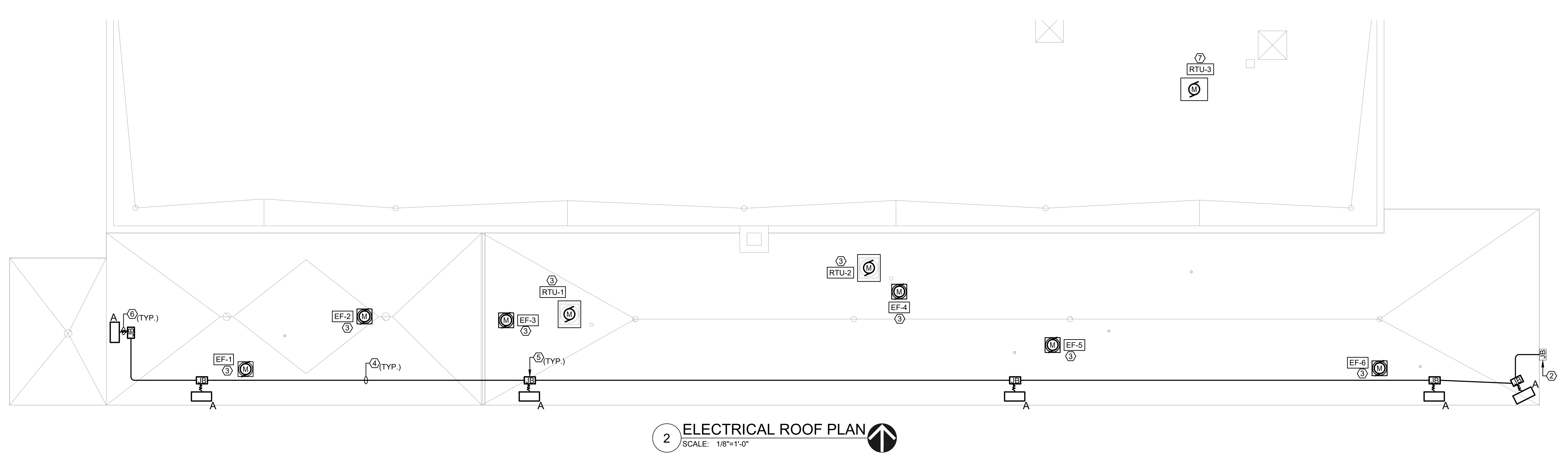
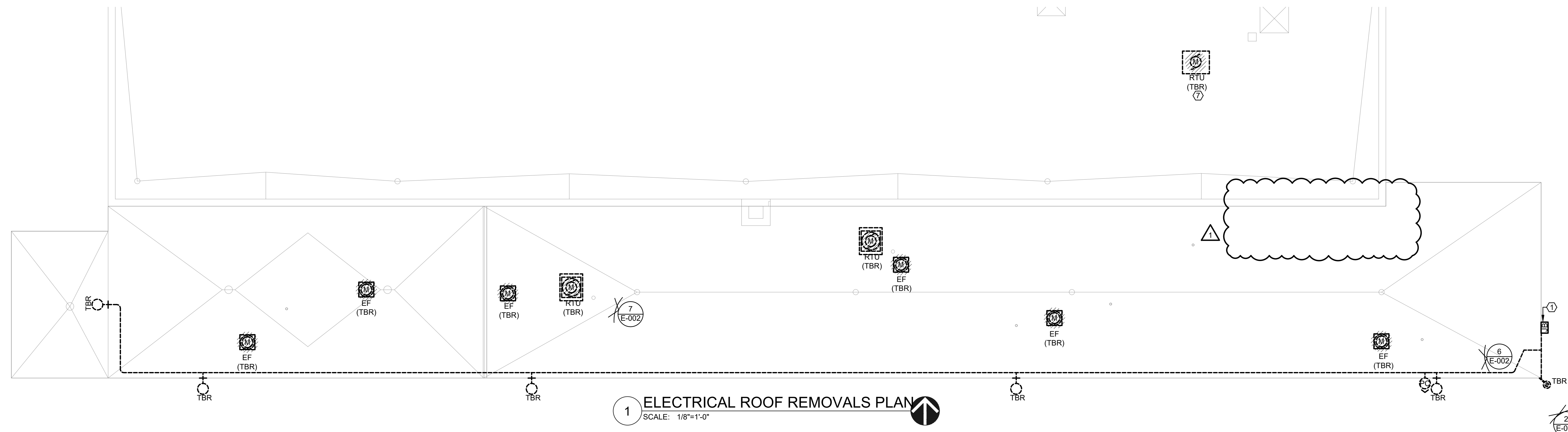
- LIGHTING:** WHERE LIGHTING IS INDICATED TO BE REMOVED - UNLESS OTHERWISE INDICATED ON PLAN:
- REMOVE FIXTURES IN THE GENERAL AREAS INDICATED ON PLAN. FIELD VERIFY AND COORDINATE WITH GENERAL CONTRACT.
 - MAINTAIN HOMERUNS AND SWITCHING MEANS, FOR RECONNECTION TO REPLACEMENT LIGHTING FIXTURES.
 - REMOVE ROOF-MOUNTED EXPOSED CONDUIT AND PULL BACK CIRCUIT TO JUNCTION BOX AS SHOWN TO ACCOMMODATE ROOF MODIFICATIONS BY C-CONTRACT. UPON COMPLETION OF ROOF MODIFICATIONS, EXTEND CONDUCTORS/CONDUIT TO RE-FEED REPLACEMENT FIXTURES.
 - REMOVE CONTACTORS ASSOCIATED WITH LOW VOLTAGE SWITCHING DEVICES.
 - DISPOSE OF ALL LAMPS IN ACCORDANCE WITH STATE/FEDERAL AND EPA REQUIREMENTS.
 - DIRECTOR'S REPRESENTATIVE HAS THE RIGHT OF FIRST REFUSAL FOR ALL REMOVED FIXTURES. ALL REMAINING FIXTURES BECOME THE PROPERTY OF THE CONTRACTOR.

GENERAL NOTES:

- REFER TO DRAWING E-001 FOR ELECTRICAL LEGENDS, ABBREVIATIONS AND GENERAL PROJECT NOTES.
- REFER TO DRAWING E-001 FOR RACEWAY SCHEDULE FOR APPROVED RACEWAY USAGE.
- REFER TO DRAWING E-001 FOR BRANCH CIRCUIT SCHEDULE (BCS) FOR CIRCUIT REQUIREMENTS.
- PROVIDE THHN/THWN-2 CONDUCTORS.
- INSTALL PER NECA1 GUIDELINES.
- PROVIDE HANGERS & SUPPORTS AS REQUIRED.
- PROVIDE GROUNDING PER NEC FOR ALL ELECTRICAL EQUIPMENT AND ASSOCIATED EQUIPMENT.
- ALL CONDUCTORS AND EQUIPMENT NOT SHOWN FOR CLARITY. COORDINATE WITH ALL TRADES AND PROVIDE COMPLETE ELECTRICAL CIRCUITING FOR ALL INSTALLED EQUIPMENT. ALL REQUIREMENTS TO BE PER NEC.
- REFER TO ELECTRICAL REFERENCE PLAN, DRAWING E-002, FOR ADDITIONAL INFORMATION SHOWING PANEL LOCATIONS, PHOTOGRAPHS, AND ADDITIONAL DETAILS.

KEY NOTES:


- REMOVE LIGHTING CIRCUIT (CONDUCTORS/ CONDUIT, ETC.) MOUNTED ON ROOF AND PULL BACK TO WHERE IT EXISTS BUILDING. TERMINATE IN JUNCTION BOX (SIZED PER NEC). MAINTAIN CIRCUIT FROM JUNCTION BOX THROUGH INTERIOR OF BUILDING IN GOOD CONDITION THROUGHOUT PROJECT. REFER TO REFERENCE PHOTO, THIS DRAWING FOR ADDITIONAL INFORMATION.
- EXTEND LIGHTING CIRCUIT FROM EXTERIOR JUNCTION BOX TO REPLACEMENT LIGHTING FIXTURES UPON COMPLETION OF ROOF MODIFICATIONS BY C-CONTRACT. RUN CIRCUITS EXPOSED ALONG EXTERIOR WALL AND ROOF.
- EXTEND CIRCUIT RETAINED DURING REMOVAL PHASE AND CONNECT TO REPLACEMENT MECHANICAL UNIT.
- PROVIDE (2#10 & #10G, 3/4" C FOR LIGHTING CIRCUIT. RUN CIRCUIT EXPOSED ALONG ROOF. PROVIDE ROOF-MOUNTED SUPPORTS PER SPECIFICATION 260529.
- PROVIDE EXTERIOR ROOF-MOUNTED JUNCTION BOX TO CONNECT LIGHTING CIRCUIT TO CORD PROVIDED WITH LIGHTING FIXTURE. PROVIDE CORD CONNECTORS WITHIN JUNCTION BOX. COORDINATE JUNCTION BOX LOCATION IN FIELD TO CONFIRM BOX IS MOUNTED WITHIN REACH OF CORD.
- FEEDER CORD PROVIDED WITH FIXTURE TRUNNION MOUNTING KIT.
- RTU TO BE REPLACED BY H-CONTRACT WITH UNIT THAT REQUIRES LARGER CIRCUIT (30A, 2P UP TO 40A, 2P). MAINTAIN CONDUIT PATH BETWEEN UNIT AND PANEL LP-3A, BUT REMOVE CONDUCTORS BACK TO SOURCE PANEL. PROVIDE (2#8 & #10G IN EXISTING CONDUIT FOR REPLACEMENT UNIT. REFER TO REFERENCE PLAN, DRAWING E-002, AND MECHANICAL EQUIPMENT CONNECTION SCHEDULE, DRAWING E-001, FOR ADDITIONAL INFORMATION.




NEW YORK STATE OF OPPORTUNITY | **Office of General Services**

DESIGN & CONSTRUCTION

CONSULTANT



Architectural Resources




JADESTONE ENGINEERING, PLLC

CERTIFICATE OF AUTHORIZATION No. : 0018566

WARNING:

THE ALTERATION OF THIS MATERIAL IN ANY WAY, UNLESS DONE UNDER THE DIRECTION OF A COMPARABLE PROFESSIONAL, I.E. ARCHITECT FOR AN ARCHITECT, ENGINEER FOR AN ENGINEER OR LANDSCAPE ARCHITECT FOR A LANDSCAPE ARCHITECT, IS A VIOLATION OF THE NEW YORK STATE EDUCATION LAW AND/OR REGULATIONS AND IS A CLASS 'A' MISDEMEANOR.



STATE OF NEW YORK
JAMES GARRABRANT
LICENSED PROFESSIONAL ENGINEER
106086
REGISTRATION EXPIRES: 06/31/2028

WE HEREBY AFFIRM THAT TO THE BEST OF OUR KNOWLEDGE, BELIEF, AND PROFESSIONAL JUDGEMENT, THESE PLANS AND SPECIFICATIONS ARE IN COMPLIANCE WITH THE 2020 ENERGY CONSERVATION CONSTRUCTION CODE OF NEW YORK STATE AND THE 2020 NEW YORK STATE UNIFORM BUILDING CODE.

CONTRACT: ELECTRICAL

TITLE: REPLACE ROOF & WINDOWS DOT REGION 4, MONROE COUNTY

LOCATION: 938 W LINDEN AVE
EAST ROCHESTER, NY 14445

CLIENT: NEW YORK STATE DEPARTMENT OF TRANSPORTATION

MARK	DATE	DESCRIPTION
▲	03-04-2025	APPENDUM #1
	01-17-2025	BID DOCUMENTS

PROJECT NUMBER: 47437 - E

DESIGNED BY: SAG

DRAWN BY: CAH

FIELD CHECK:

APPROVED:

SHEET TITLE:

ROOF PLANS

DRAWING NUMBER: E-101

SHEET 11 OF 11